

MINIOPTICAL POWER METER

LIFE FIBER



Optical power meter LIFE FIBER LF-PM816 measures optical power loss in ber networks based on multimode and single-mode bers. The meter is calibrated to measure optical power at six wavelengths (nm): 850, 1300, 1310, 1490, 1550, and 1625. A wide measuring range (-50...+26 dBm) and high accuracy (not worse than +/-5% / 10 nW) allow for precise control of any optical network. Aside from the direct measurements of the optical power (in mW and dBm), it is also possible to set 0 dB reference level

- New - optical power meter with measurement memory
- Memory of 999 measurements, communication with a PC via USB interface, PC application • InGaAS detector
- Calibrated for the following wavelengths [nm]: 850, 1300, 1310, 1490, 1550, 1625
- Measurements of absolute optical power levels in dBm/milliwatts or relative levels with respect to a reference level in dB
- Resolution of 0.01 dB, measurement error $\pm 5\% \pm 10\text{nW}$
- Powered from two AA rechargeable batteries, charged from the included AC charger
- AUTO-OFF function
- Set of accessories, including protective carrying case

MINIOPTICAL POWER METER

LIFE FIBER



Details:

Optical power meter LIFE FIBER L5822 measures optical power loss in ber networks based on multimode and single-mode bers. The meter is calibrated to measure optical power at six wavelengths (nm): 850, 1300, 1310, 1490, 1550, and 1625. A wide measuring range (-50...+26 dBm) and high accuracy (not worse than +/-5% / 10 nW) allow for precise control of any optical network. Aside from the direct measurements of the optical power (in mW and dBm), it is also possible to set 0 dB reference level. The single optical port of the meter precisely measures all wavelengths. The device has the function auto switch off, protecting the batteries against accidental discharging, and the battery level indicator.

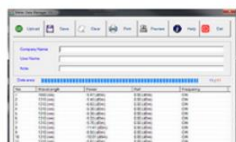
A particularly noteworthy function of the meter is automatic recognition of the wavelength of the connected light source and measure of its power. The meter memory can save up to 999 measurements, which can then be easily exported to a PC via the built-in USB port. The application offered by the manufacturer allow for the generation of measurement reports that can be exported to a .csv file

Measurement Report

Company Name: SDFOL
User Name: Lufiber
Date: 2019-10-28 14:57:53
Date time: 2019-10-28 14:57:53
View time: 2 seconds

No.	Wavelength	Power	Unit	Emergency
1	1310 nm	-4.41 dBm	0.00 uW	OK
2	1310 nm	-4.41 dBm	0.00 uW	OK
3	1310 nm	-4.50 dBm	0.00 uW	OK
4	1310 nm	-4.50 dBm	0.00 uW	OK
5	1310 nm	-4.50 dBm	0.00 uW	OK
6	1310 nm	-4.50 dBm	0.00 uW	OK
7	1310 nm	-4.50 dBm	0.00 uW	OK
8	1310 nm	-4.50 dBm	0.00 uW	OK
9	1310 nm	-4.50 dBm	0.00 uW	OK
10	1310 nm	-4.50 dBm	0.00 uW	OK
11	1310 nm	-4.50 dBm	0.00 uW	OK

A measurement report



View of the app window with measurements

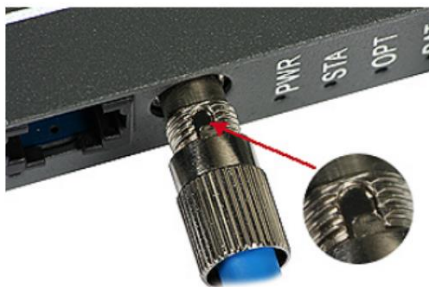
MINIOPTICAL POWER METER

LIFE FIBER



Key features

- device calibrated for the following wavelengths [nm]: 850, 1300, 1310, 1490, 1550, 1625
- InGaAS detector
- measurements of absolute optical power levels in dBm/milliwatts or relative levels with respect to a reference level in dB;
- measuring range: -50...+26 dBm (1550 nm), resolution of 0.01 dB, measurement error $\pm 5\% \pm 10\text{nW}$
- powered from two AA rechargeable batteries, charged from the included AC charger; AUTO-OFF function;
- memory of 999 measurements, communication with a PC via USB interface; PC application
- easy to read, large backlit screen;
- set of accessories, including protective carrying case.



*Proper positioning of the FC/PC plug.
The guide of the plug fits into the groove on the socket.*

Notice: the included PC application is not fully compatible with Windows 10 OS. In the case of any problem with the app, please run it on a PC with a previous Windows system.

MINIOPTICAL POWER METER

LIFE FIBER



Specifications :

Name		Mini Optical Power Meter	
Brand		LF-PM816	
Product type		Optical power meter	
Meter type		Single-mode, Multimode	
Measured wavelength	nm	850, 1300, 1310, 1490, 1550, 1625	
Detector type		InGaAs	
Measurement range	dBm	-50...+26	
Connector		FC/UPC	
Adapters		SC/UPC	
Measurement accuracy	%	5 (-10 dBm)	
Measurement memory		Yes	
Maximum temperature	operation	°C	-10...+50
	storage		-20...+70
Power supply	type	-	2 × AA rechargeable battery
	voltage	V	2 × 1.5
	capacity	mAh	no data
Dimensions		mm	160 × 76 × 45
Weight		kg	0.27